

# Installation Guide for CatObserver 5043

## Table of Contents

1	Introduction .....	2
2	Installing catObserver .....	3
	a. Follow the Installation Wizard .....	3
	b. Accept the license agreement, choose an installation folder and install. When the installation is complete you will be prompted to Finish. This completes the very simple installation process. ....	3
3	Get Licensed .....	4
	a. Open catSite .....	4
	b. In catSite select Tools → Licensing .....	4
	c. Retrieve a license .rqst file from the unit you wish to license .....	4
	d. Load the .pack File to Update Your License .....	5
4	Add an Observer .....	6
	a. Open catSite .....	6
	b. Open the Setup Tab and select the 'Configure Servers' Option .....	6
	c. Select the 'Cameras' in the drop down menu of the specific NVR you wish to record the Observer to.....	6
	d. Click 'New' from the selection of buttons at the bottom of the window.....	6
	I. Camera Connection Window .....	7
	II. General Settings Window .....	7
	III. Video Feeds Window .....	8
	IV. PTZ.....	9
	V. Scheduled Recordings .....	9
5	Un-installation .....	11
	a. Start → Control Panel .....	11
	b. Uninstall a Program.....	11
	c. Select the CathexisVision Program that You Want to Uninstall, and Click Uninstall .....	11

# 1 Introduction

catObserver is Cathexis software designed to record on-screen activity. It can record multiple screens on an individual computer, and can record the activity of any computer on the same network as the **recording Windows NVR (catObserver only runs on Windows NVR's)**. (Cathexis NVR UNIT – NetBSD, Windows, Fedora)

In general it is a very useful application for any situation that would benefit from monitoring on-screen activity (e.g. banks, online examination rooms, Point of Sale systems etc.). It can easily be run in these situations by purchasing the catSite Windows NVR software, along **with the additional catObserver software**. (Encoder/IP license. Each screen or unit is treated as an encoder on the network. You can record on motion, review etc.)

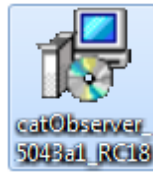
In a security setting it has more specific applications, beyond simply monitoring operator activity. For instance, since it records the point of view of the operator, it is possible to review an event that took place across multiple cameras by viewing the catObserver recording, instead of pulling up and viewing multiple camera recordings.

(Security environment – See what the was viewing at the time of a robbery. See which domes he controlled or if he made changes to the setup maybe)

The following guide will walk you through the process of installing catObserver\_5043.

## 2 Installing catObserver

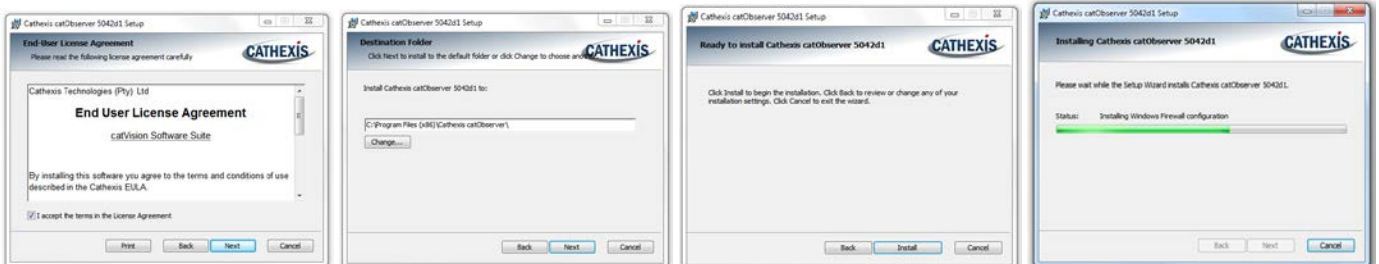
catObserver must be installed on the computer whose screen is to be recorded, **it needs not be installed on the NVR.** Start the setup process on the chosen computer by double-clicking catObserver installer icon.



### a. Follow the Installation Wizard



### b. Accept the license agreement, choose an installation folder and install. When the installation is complete you will be prompted to Finish. This completes the very simple installation process.



### 3 Get Licensed

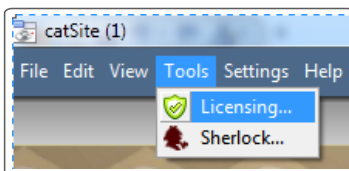
Before you can add an Observer to your NVR you need the required license (the relevant license is the same license required for IP cameras. So, if you are licensed for IP cameras, you don't need a new license). The licensing process is standard for all CathexisVision Suite Licenses.

Only the NVR to which the Observer will be recording needs to be licensed.

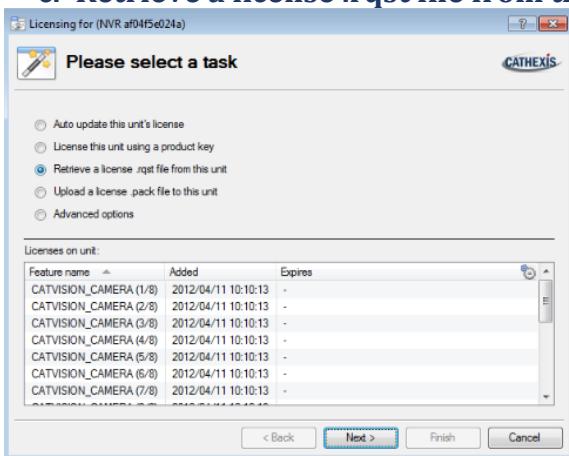
#### a. Open catSite



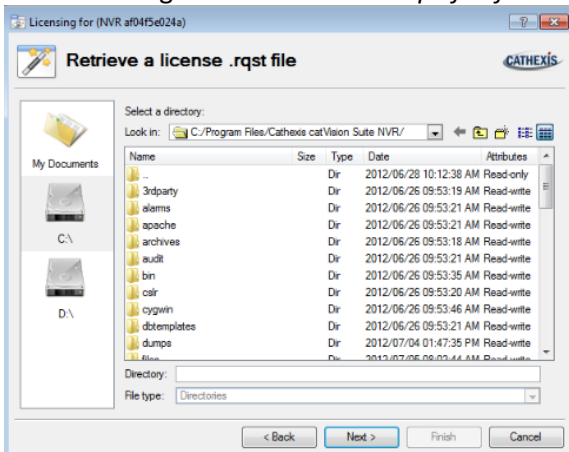
#### b. In catSite select Tools -> Licensing



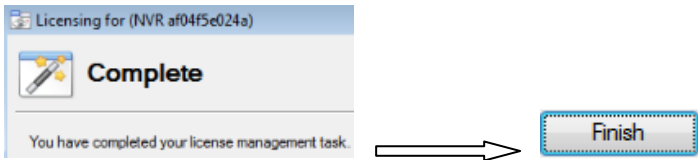
#### c. Retrieve a license .rqst file from the unit you wish to license



After selecting *Retrieve a license .rqst file from this unit*, click 'Next' button.



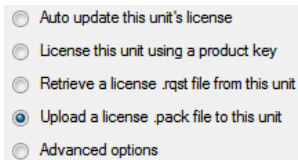
Select a location into which you will save the .rqst file. Click 'Next', and if all went well you should be presented with the message that "You have completed your license management task", click 'Finish'.



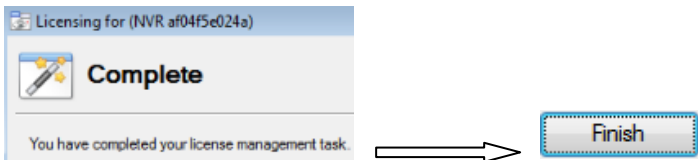
After saving the .rqst file email it to [support@cat.co.za](mailto:support@cat.co.za) stating which specific license/s you require. Support will reply with a .pack file attachment that you then need to load onto your NVR.

#### d. Load the .pack File to Update Your License

To load the .pack file follow the same process you followed with license retrieval (in catSite select Tools → Licensing) choosing **Upload a License .pack file to this unit**, as shown below:



Navigate to the location where your newly received .pack file is stored. Select the file, and select the 'Next' button. You will get the same finishing message as when you retrieved your .rqst file.



Now that your license is properly updated you can add an Observer.

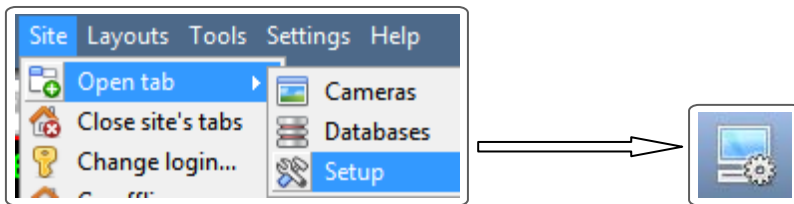
## 4 Add an Observer

The setup process in 5043 is very different to that in 5042. All setups are centralized in the setup tab, and every setup follows a 'wizard' process that will be familiar to anybody who has used Windows.

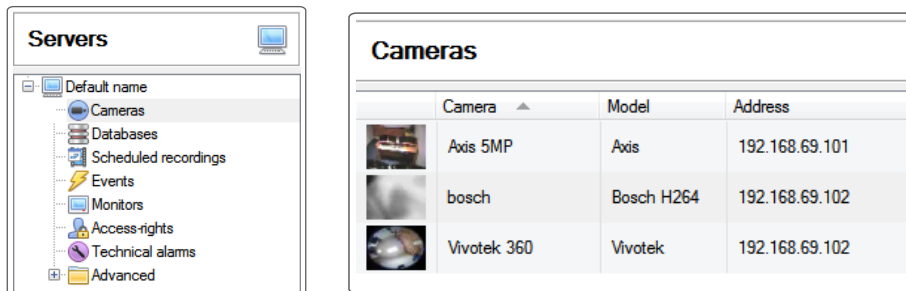
### a. Open catSite



### b. Open the Setup Tab and select the 'Configure Servers' Option



### c. Select the 'Cameras' in the drop down menu of the specific NVR you wish to record the Observer to.

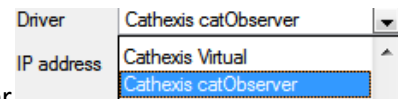
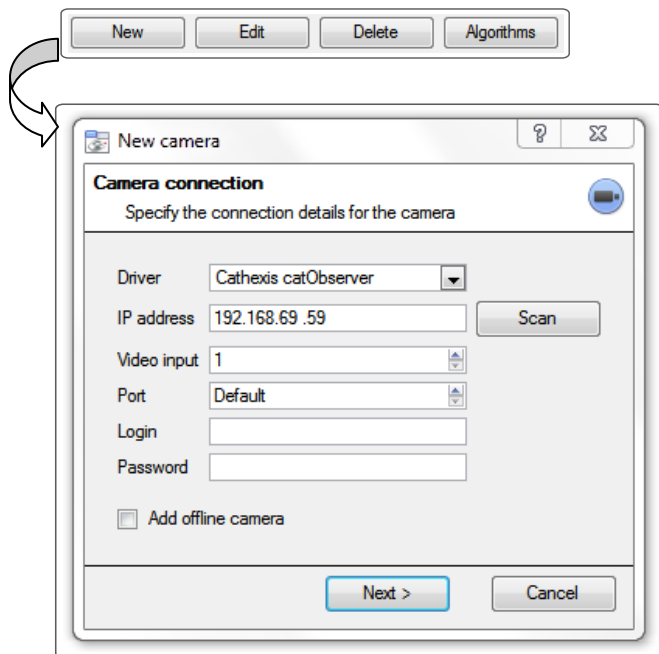


This will open the Cameras tab in the panel to the right of the Servers panel. It is in this panel that you manage cameras/encoders on the specific server that you are dealing with. The Observer is added as an Encoder.

### d. Click 'New' from the selection of buttons at the bottom of the window

This will bring up the wizard that will guide you through the addition of your catObserver Encoder. Another way to open the wizard is to right-click any whitespace in the Cameras panel and select 'New'.

### I. Camera Connection Window



- **Driver:** Select catObserver driver from the dropdown menu under...
- **IP address:** This is the IP address of the unit whose screen you want to monitor, and **not:** the address of the NVR to which you are recording).

\*Note: When observing a screen on a local machine [i.e. observing the screen/s of the unit to which you are recording] you must set the IP address to 127.0.0.1

- **Video Input:** This is the monitor you wish to record.

If you want to record more than one screen on an individual computer you need to add one Observer encoder per screen. You will use the same IP address, but change the Video Input number to match the monitor you wish to record.

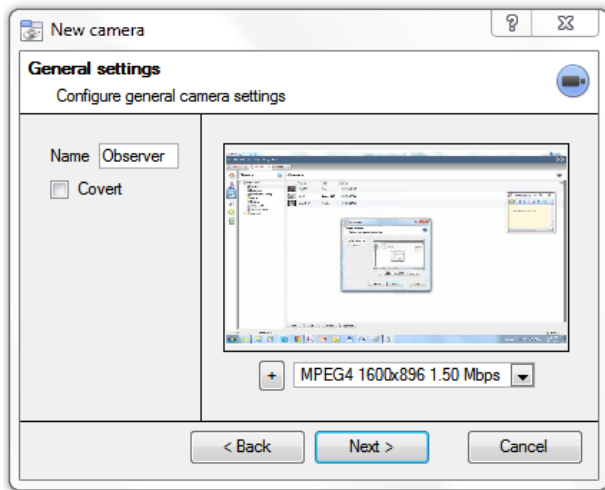
- **Port:** Leave this at default.
- **Login and Password:** This is not a feature used on the catObserver encoder

When you are happy with the settings in this window click Next, this will take you to the General Settings Window.

### II. General Settings Window

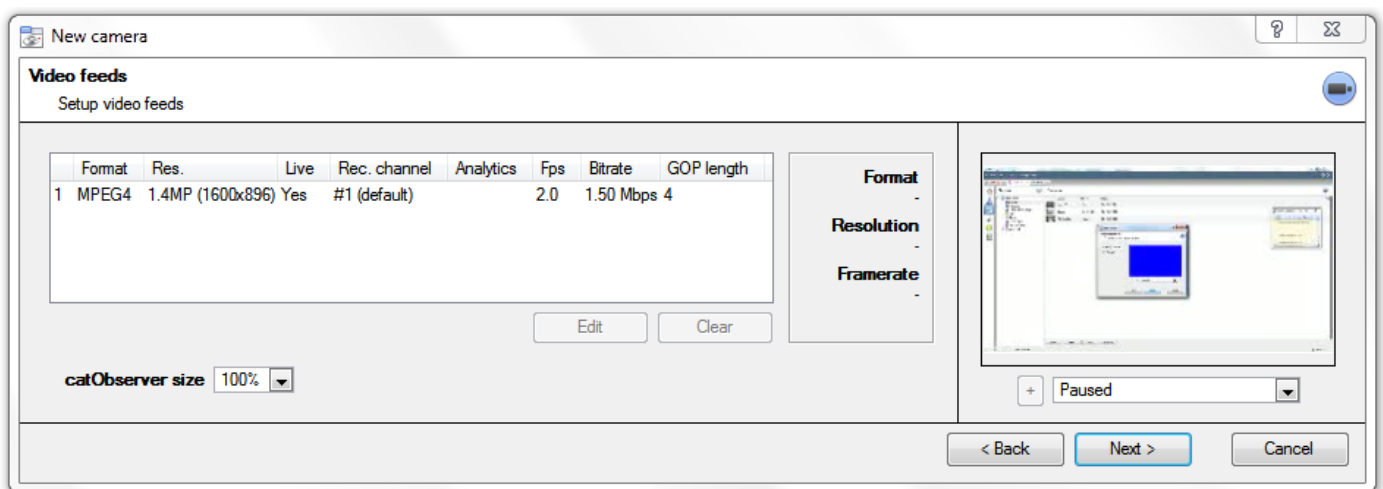
Under General Settings you will chose the name of your Observer and set it either as an Overt or a Covert camera. There is a preview pane on the right which will show a paused screen capture of the feed from the Observer. To see a live stream click the drop down menu and select the stream that is available.



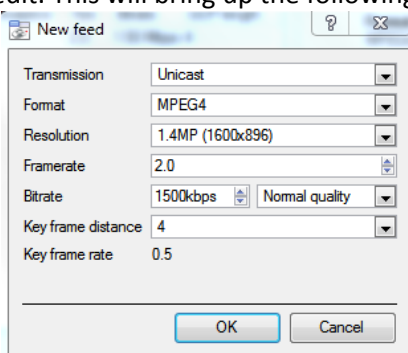


When you are happy with the settings in this window click Next to go to the Video Feeds window.

### III.Video Feeds Window



The Video Feeds window follows on from the General Settings Windows. There is a preset stream present, and the live preview pane is still present from the last window. You can edit the settings of the feed by either selecting the feed with one left-click then selecting the  button; or by simply double-clicking the feed that you want to edit. This will bring up the following window:



**Transmission:** Unicast is the only transmission option for the catObserver.

**Format:** MPEG4 is the only format option for the catObserver

**Resolution:** This will reflect the option chosen in the   option. The % chosen will be a percentage of the full pixel count of your current screen resolution.

**Frame Rate:** This is the number of screen captures the Observer will take per second

**Bitrate:** Corresponds to the amount of information that the encoder will send over the network per second. The Bitrate, like the catObserver size, will directly influence the quality of the image.

**Key Frame Distance:** MPEG4 is a differential algorithm and the Key Frame Distance is the spacing between reference images/key frames. Key frames generally take up more space than the images between them, especially if there is little movement in the image.

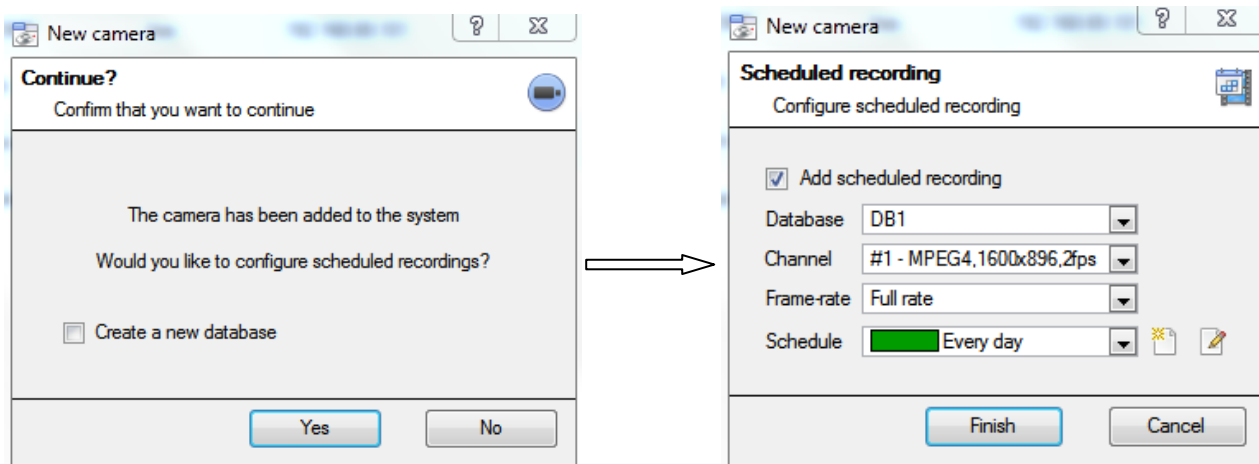
The key frame rate is the number of key frames per second.

#### IV.PTZ

Leave PTZ unchecked.

#### V.Scheduled Recordings



The Observer has now been added to the system, if you want to record the stream coming from the observer you will have to setup scheduled recordings [there is no Video Motion Detection on the catObserver, so, other than setting up recording of the Observer based on other systemic events, scheduling recordings is the only way to record a catObserver stream]. This can either be done now, or at a later stage. To do so now click 'Yes'. You may also create a new database to record the catObserver to if you wish to separate out the catObserver recordings.

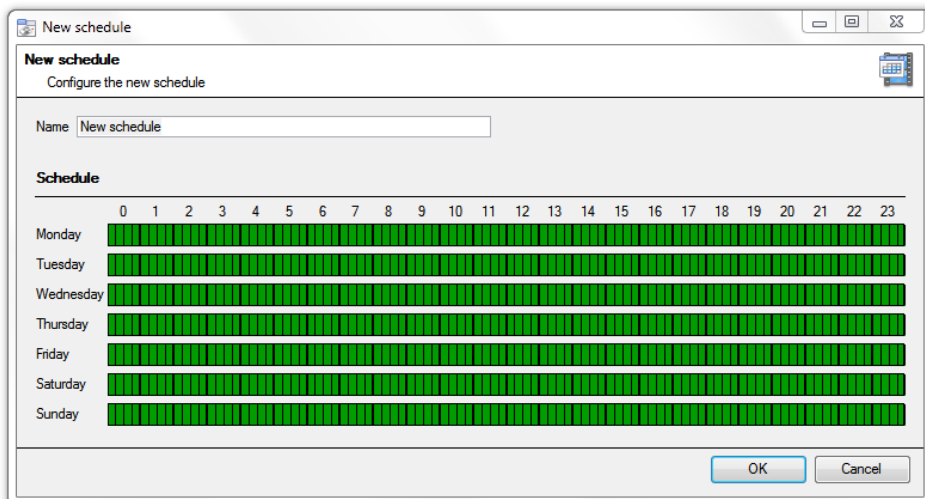


**Database:** Select the database that you wish to record the Observer to

**Channel:** There will only be one channel available.

**Frame Rate:** This will designate how many of the frames captured by the catObserver per second are recorded to the database. You will have the option of either Full Frame Rate, or Key Frames.

**Schedule:** The default will be set to record 24/7 under the profile Every Day. To create a new profile select , to edit an existing profile select . This will bring up the window below:



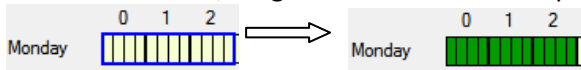
The green cells indicate time segments during which the Observer will record to the chosen database.

To *de-select* a time period right-click on the beginning of the period you do not want recorded and, holding down the mouse button, drag the mouse to the end of the period you don't want recorded.



The colour of the time segments that will not be recorded will change from green to cream.

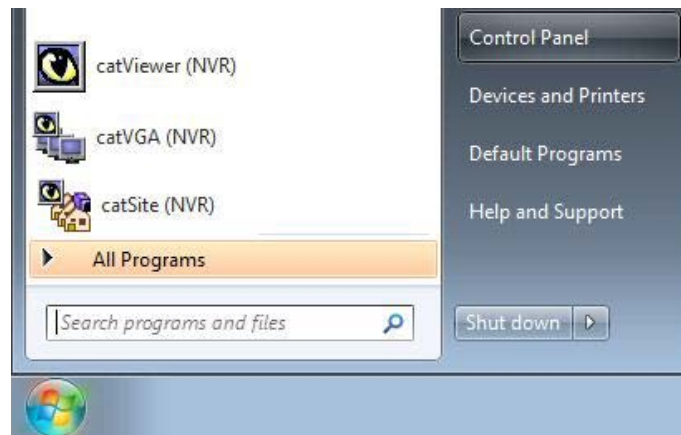
To *select* a time segment for recording left-click at beginning of the time you want to be recorded and, holding down the mouse button, drag the mouse to the end point, then release the mouse button.



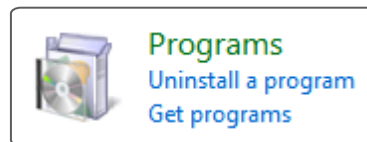
Once you are happy with your schedules click 'Okay'. Congratulations, you should now have a running and recording catObserver.

## 5 Un-installation




### a. Start -> Control Panel



### b. Uninstall a Program



### c. Select the CathexisVision Program that You Want to Uninstall, and Click Uninstall

 Cathexis catObserver 5043a1_RC18	Cathexis Technologies (Pty) Ltd
 Cathexis catVision Suite 5043a1_RC21	Cathexis Technologies (Pty) Ltd
 CCleaner	Piriform